



Head Office - Mumbai:

Pashmina Builders & Developers Pvt. Ltd.

3rd Floor, Bengal Chemical Bldg, 502,

Veer Savarkar Marg, Prabhadevi, Mumbai - 400 025.

Tel: 022 - 6616 6700 • Fax: 022 - 66166777

email : salesmumbai@pashminadevelopers.com

www.pashminadevelopers.com

Disclaimer : All layouts, specifications, images & information are tentative and subject to change at the sole discretion of the company without any prior notice

THE 'S' LIFE



ABOUT PASHMINA



Pashmina - the famous Kashmiri wool known for its quality and class signifies the moving spirit behind Pashmina Realty. We conceive, build and deliver residential, commercial and retail real estate properties with a signature touch. Every apartment, row house, villa, commercial and retail properties of Pashmina carries a signature touch by combining unique design aesthetics with state-of-the-art construction techniques.

Corporate Social Responsibility

As responsible corporate citizen Pashmina Realty is committed to improving the socio-economic well being of the underprivileged besides developing residential, commercial, retail and infrastructural facilities. In pursuit of this commitment we have joined hands with "Habitat for Humanity" – an internationally reputed NGO that provides shelter for the needy in over 92 countries.



A Signature space that defines who you are, a Spectacular lifestyle choice that says you have arrived, nestled in the Strategic location in the heart of the city with Serene, pristine and green environment near the Soothing Five Gardens is what we call the 'S' life.

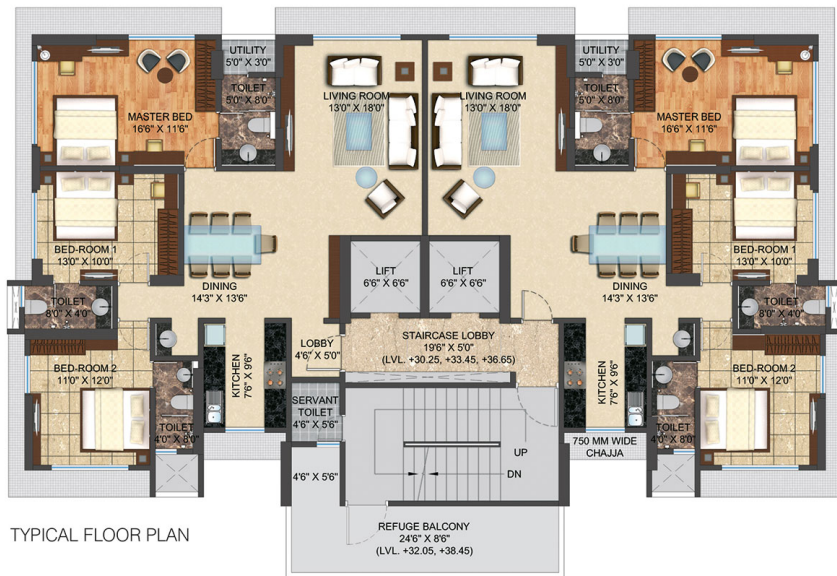
Discover the 'S' life experience in its true form at Pashmina Serene. It will become a Signature tower that will be a part of the ever glittering Mumbai Skyline. The Stunning 19 Storey luxury tower has Spacious apartments which have been designed with comfort, convenience and efficiency in mind.

Amongst its many features, the grand entrance lobby is an aesthetic masterpiece and welcomes you with sheer grandeur while the magnificent view from the apartments will leave you spell bound. At Pashmina Serene it is about luxury with genuine values.

The Serene life is the next experience in luxury living that awaits you. Take the next step and Script a new Story.

WELCOME TO PASHMINA SERENE.

signature 'S' pace



STYLISH 'S' SCULPTURE

Living in a piece of art is now a reality. Pashmina Serene is an architectural delight with a stylish exterior and a grand lobby area. The innovative parking system is one of its kind and makes parking a joyful experience. The 'S' life experience will surround you with luxury and panache.

EXTERNAL AMENITIES :

- Automated Tower Parking
Swipe & park convenience at your doorstep. Just park your car in the elevator and swipe a designated parking card for the system to place your car in its spot. Swipe your card again and your car will arrive at the entrance of the elevator facing towards the exit.
- Grand Entrance Lobby
- Fitness Centre
- E-Homes (With Video Door Phones & Intercom)
- CCTV Surveillance
- Elevators of reputed brand
- Servants toilet on every mid-landing
- Rain-Water Harvesting
- Power Back-up system for common areas including lifts and car park
- Provision for piped gas

INTERNAL AMENITIES :

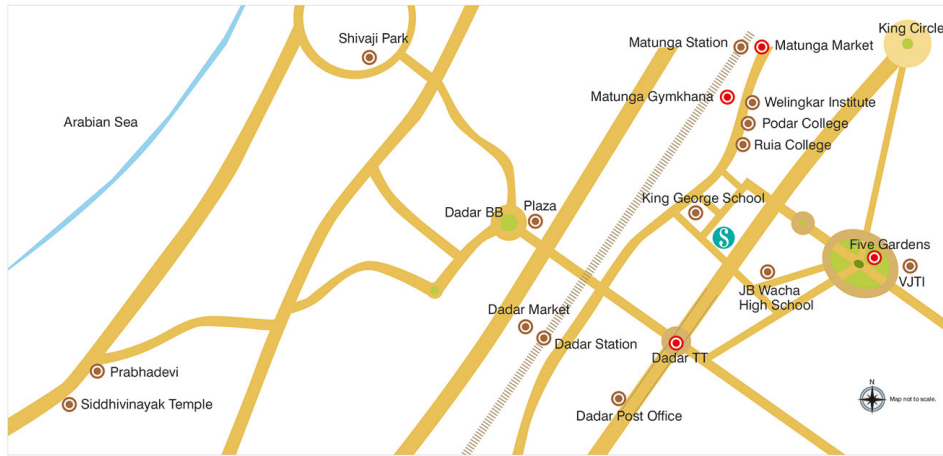
- Italian Marble in Living & Dining
- Wooden Flooring in Master Bedroom
- Vitrified Flooring in Bedroom & Kitchen
- Premium Bath Fittings
- Designer Tiles in Bathroom
- Provision for Cable TV/Dish Antenna connections
- Granite Platform with SS Sink in Kitchen
- Anodized Aluminium Powder Coated Windows



There is nothing more comforting than your very own personal space. With the 'S' life we give you nothing short of excellence. Every apartment is extremely spacious and well planned keeping your needs in mind. The magnificent view and the luxurious interiors will cocoon you in your new lifestyle choice.

- Only two apartments per floor giving you privacy & exclusivity (can be optionally made into one apartment)
- Customizable apartments with no intruding beams
- The Apartment is open from 3 sides ensuring:
Cross ventilation
Ample sunlight & breeze for a positive atmosphere
- Spacious rooms
- Servant's toilet on every mid-landing





strategic 'S'ite

The city life, the city culture, the city lifestyle is experienced best when you are in the heart of Mumbai. Hindu Colony, Dadar is a prime location in the island city where one has every luxury, comfort and convenience just a stone's throw away. Even though Pashmina Serene is in close proximity to Mumbai's popular landmarks it maintains a sense of serenity which is a rare feature today. The 'S' life is an amalgamation of many aspects of everyday life, one of which demands that your address is a lifestyle culture in itself.

- Centrally Located
- Close to Dadar TT
- 5 min walk to Five Gardens
- Dadar & Matunga station - within 1 Km.
- Hospital & Clinics - within 1 Km. radius
- Proximity to Markets (Matunga & Dadar)
- Close to Dadar, Matunga and Parsi Gymkhanas
- Schools/Colleges/Management & Technical Institutes - within 1 Km. radius (JB Vachha, King George, Podar, Ruia, Welingkar, VJTI, UICT, Khalsa, SIWS, St. Josephs, Don Bosco and more)
- Banks & ATMs - within 1 Km. radius
- Proximity to Multiplexes
- Temples / Jain Derasar - within 1 Km. radius



Actual Image of Five Gardens